

WALKER TALKER

Volume 40

Fall 2008


POLYPROCESSING
COMPANY

IMFO®

The Integrally Molded Flanged Outlet or **IMFO®** is a critical value offering from Poly Processing. The design of the **IMFO®** is key. The flange is located at the low point of the tank, and provides full drain capability. The flange is molded while the tank is processing; therefore it is stress free and part of tank, unlike FRP hand-laid fittings. The flange is the same material as the tank, and is not an insert as offered by other tank manufacturers.



Cutaway illustration showing full drain capability

The **IMFO®** was specifically designed to minimize the hazards associated with traditional vertical tank maintenance. By specifying tanks with **IMFO®**, you increase your margin of safety by eliminating the need to enter a tank for cleaning. For an even greater degree of safety and ease of maintenance, add an **IMFO®** manifold system and maximize your operating efficiency.

Endress+Hauser 
 People for Process Automation

LIQUID LEVEL INTERFACE SOLUTIONS FROM ENDRESS + HAUSER

Liquids, emulsions, and solids are all challenging applications. Choosing the right instrument for your application is critical.

Interface measurement can be difficult in a dynamic environment. Different media, densities, and temperature fluctuations, emulsion layers or solids can be present.

Is the total level consistent or fluctuating, and if so, in what range? Is the total level supposed to be available as a measured variable in addition to interface measurement? Whatever the answers to these questions are, Endress + Hauser has the right instrument for your application.

Guided Radar: Levelflex M measures both the total level and the interface level simultaneously and accurately. The measurement is not affected by density and temperature changes. Build-up on the probe has only a marginal effect. Guided radar is best suited to clean liquid/liquid interface applications.

Capacitance: Liquicap M is the right answer for many difficult interface applications with an emulsion layer, typical in many oil/water applications. E+H offers a calculation program which determines whether a reliable interface measurement can be made with your liquids.

Gamma: Available soon in the U.S., the non-invasive Gammapilot M is available for applications that cannot be measured by Guided Radar or Capacitance. In addition to liquid/liquid, Gammapilot M is suitable for liquid/solid and multi-phase measurement applications.

Inspirational Messages You Won't Hear At Work

There is no "I" in "teamwork."
But there is in "management kiss-up."

If you do a good job and work hard, you may get a job with a better company someday.

The light at the end of the tunnel has been turned off due to budget cuts.

Doing a job RIGHT the first time gets the job done. Doing the job WRONG 14 times gives you job security.

If you think we're a bad company, you should see the competition.

Rome did not create a great empire by having meetings--they did it by killing all those who opposed them.

We put the "k" in "kquality."

2 days without a human rights violation.

Your job is STILL better than asking, "You want fries with that?"

If at first you don't succeed, try management.

Teamwork means never having to take all the blame yourself.

If at first you don't succeed, delegate it.

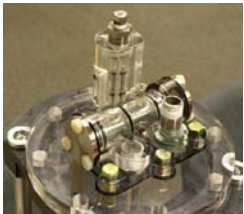
NICHOLSON STEAM TRAP

A division of CIRCOR International, Inc.

P3 – PISTON POWERED PUMP

Nicholson has just announced the release of their new patented pump mechanism, the P3. This new condensate pump is unlike any competitive model in that it does not use a spring in its operation. Instead, the P3 is piston driven. It is an all stainless steel unit with higher capacity, less chance of stall, easier maintenance and lower overall cost than competitive models. The P3 comes with a 3 year warranty. Along with the P3 Nicholson is also introducing new lower cost ductile iron tanks.

We can help you combat rising energy costs. Now is the time to replace your old, inefficient equipment with Nicholson condensate pumps, steam traps and accessories.



Endress+Hauser

People for Process Automation

t-mass for Gas!

Endress + Hauser's t-mass Thermal Mass Flowmeter provides direct mass flow measurement of gases, plus optional temperature measurement. Utilizing E+H's successful Proline transmitter concept, the t-mass features a quick setup operating menu for ease of commissioning, and on board software which freely allows the selection of up to 20 pure gases and creation of mixed gases with a maximum of 8 components.

T-mass flowmeters offer negligible pressure loss, and wide turndown of up to 100:1. They can be programmed for circular pipe or rectangular duct installation. Each device is individually calibrated and delivered with a traceable certificate. Factory calibration with flow conditioner on request. An optional cold tap device is available which provides ease of removal or replacement for low pressure and non-toxic gas applications.



PROCESS CONTROL
TRAINING
OPPORTUNITIES
at our 7th annual



AUTUMN AFTERNOON SEMINAR

Friday, October 3, 2008

1:00 – 3:00 p.m.

O'Neill KOC Hall

616 West Seminary Avenue
Lutherville, MD

FLOW MEASUREMENT FOR LIQUIDS, GASES AND STEAM

Plant safety, product quality, process optimization, environmental protection, and energy costs are just some of the reasons why flow measurement is becoming increasingly important. Peter Kucmas of Endress + Hauser will discuss the most popular flow technologies, including Coriolis, Electromagnetic, Ultrasonic, Vortex, Thermal and Differential Pressure. Visit www.prwalker.com or call us at 410-666-2142 for details and reservations.

Seating is limited, registration is required.

SCHUBERT & SALZER New 8049 Loop-Powered, Top Mount Integral Digital Valve Positioner

Schubert & Salzer's new loop powered digital positioner is compact and economical. The 8049 offers extremely precise control and repeatability, and is available on all Schubert & Salzer Control Valves. The 8049 has no steady state air consumption, and is vibration resistant and self calibrating. New and enhanced configuration software is available which includes history profiles of the positioner's run time. The 8049 comes standard with an IP 65 (weathertight) enclosure. Control signals can be 0/4 to 20 mA and 0/2 – 10 V. Four wire 24 VDC and ASI-bus units are available as well.

Mike Keefe THE DENVER POST 8-16-08



www.caglecartoons.com

PHILIP R. WALKER & ASSOC., INC.
P.O. Box 924, Cockeysville, MD 21030
(410) 666-2142 FAX (410) 667-4103
e-mail: sales@prwalker.com
www.prwalker.com

Antx Inc.
Durant
Endress + Hauser
Federal Signal Controls
Great Plains Industries
Maselli Measurements
Nicholson Steam Trap
PECO Analytical Instrumentation
Phoenix Contact
Poly Processing
ProMinent
Schubert & Salzer
Tyco Environmental Systems
Uehling Instrument Co.
Universal Flow Monitors
Wedgewood Analytical
WIKA Electronic Temperature Div.

Manufacturers' Representative
Serving Maryland, Washington, D.C.,
Virginia, and Lower Delaware since 1970